

ŁAMIGŁÓWKI CZĘŚĆ III

Memory



Ewa Somla
Iwona Lewczuk

Memory

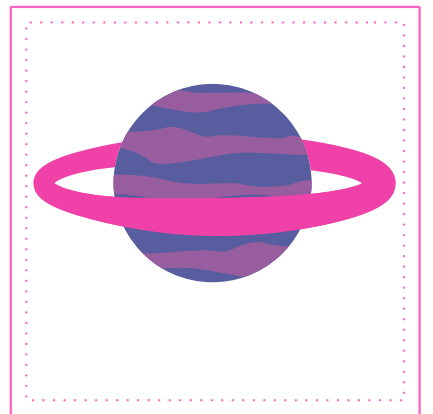
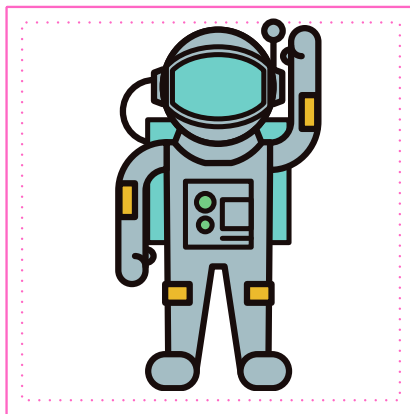
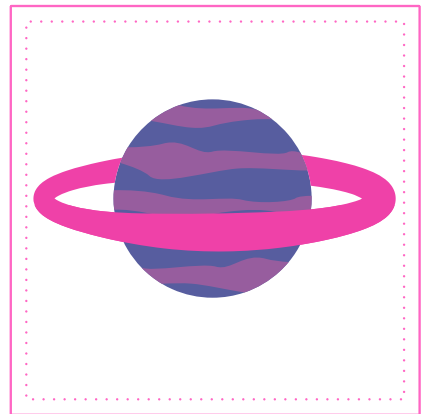
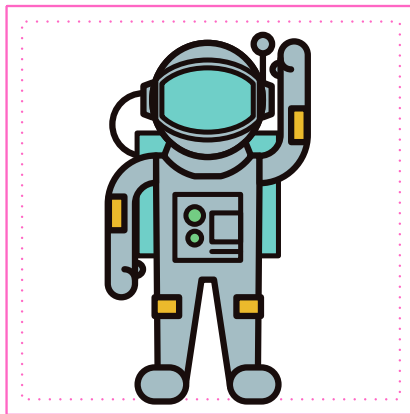
Gra Memory to świetna zabawa dla dzieci i dorosłych, dzięki której można nie tylko miło spędzić czas, ale również trenować pamięć, koncentrację i spostrzegawczość. Zasady gry "Memory" z pewnością większość z Was zna. Gra polega na odkrywaniu kart i znajdowaniu par. Szczegółową instrukcję znajdziecie poniżej.

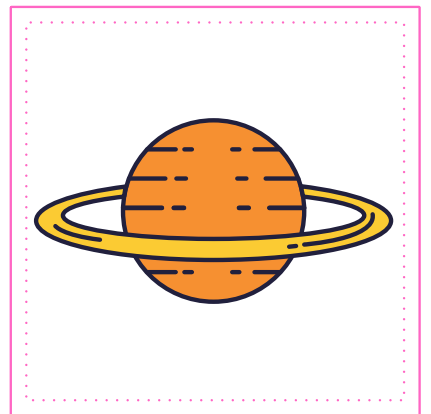
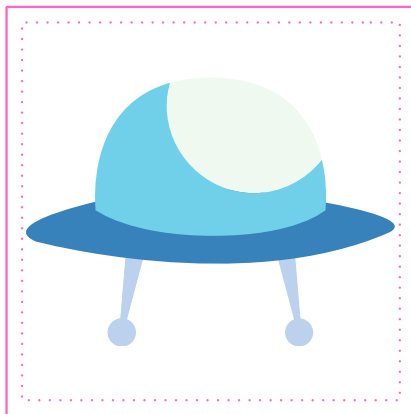
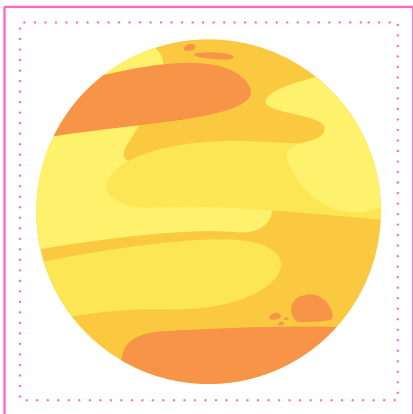
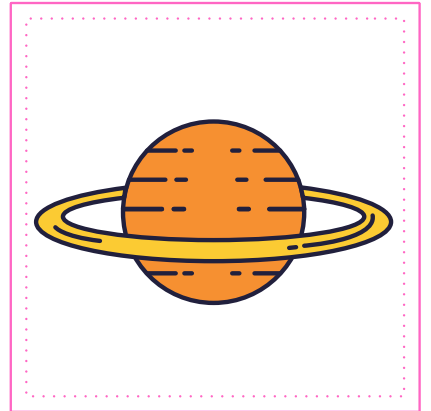
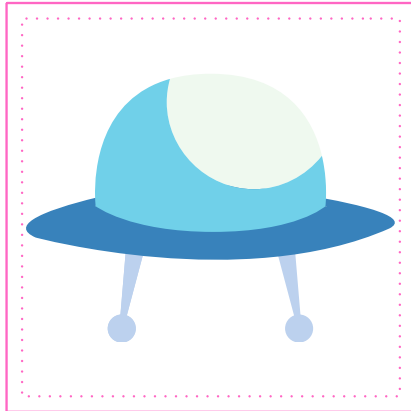
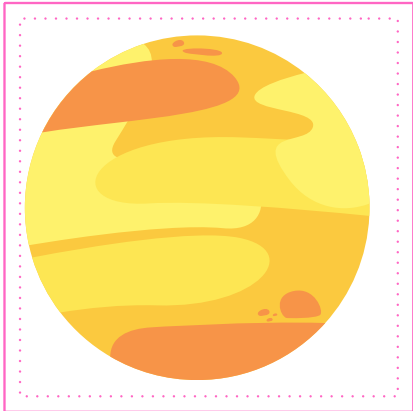
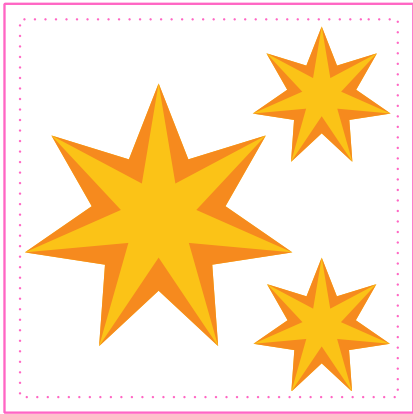
Zasady gry

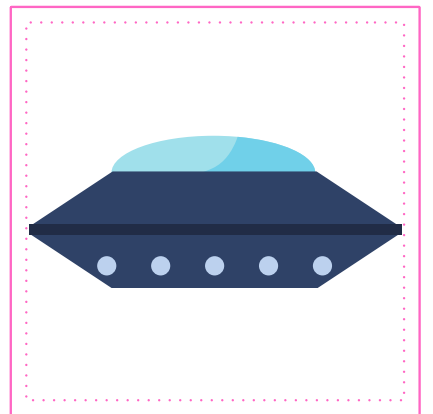
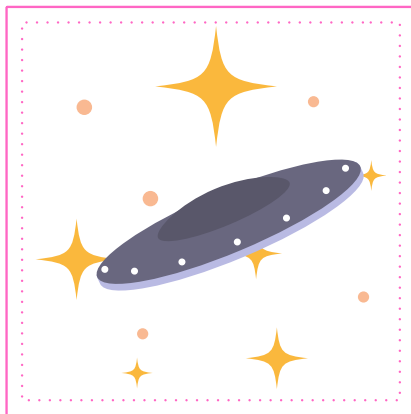
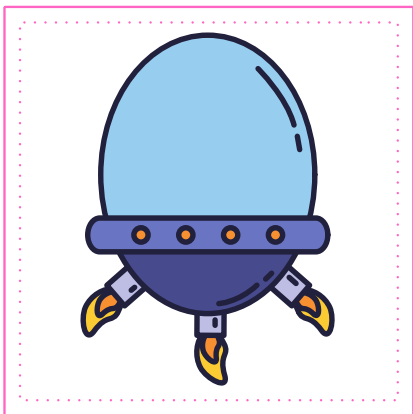
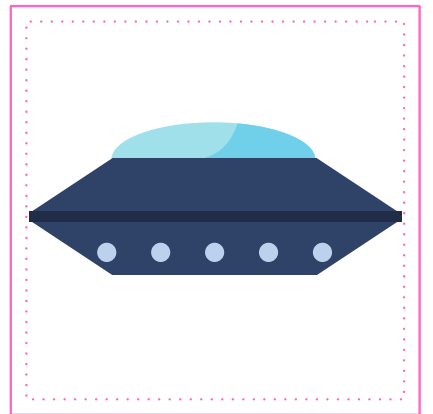
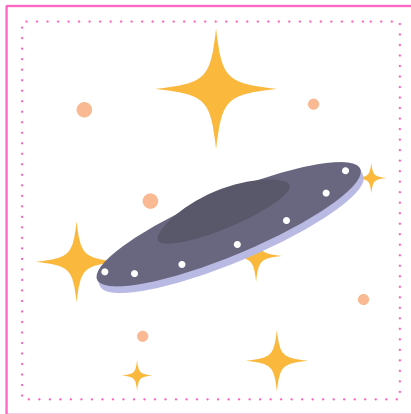
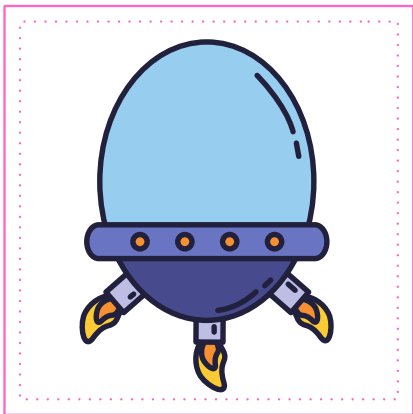
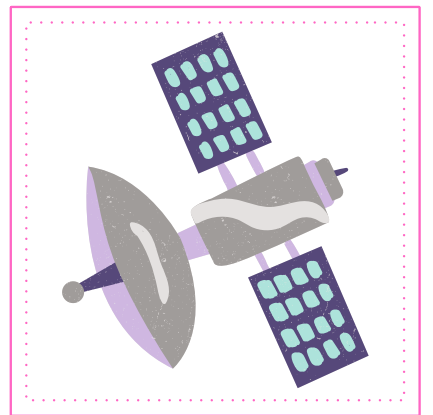
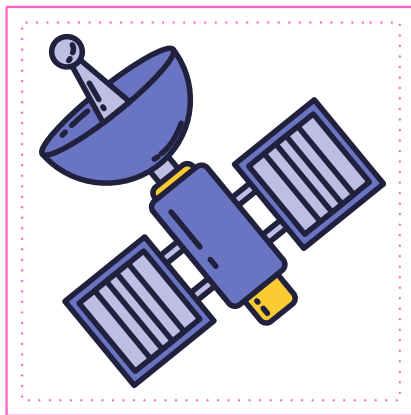
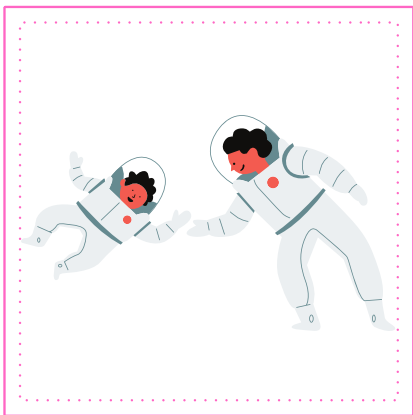
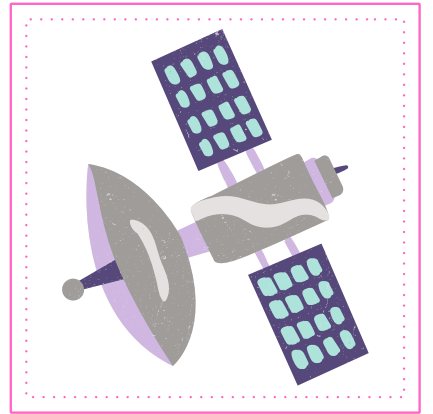
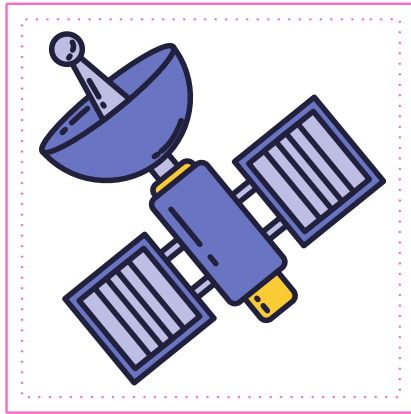
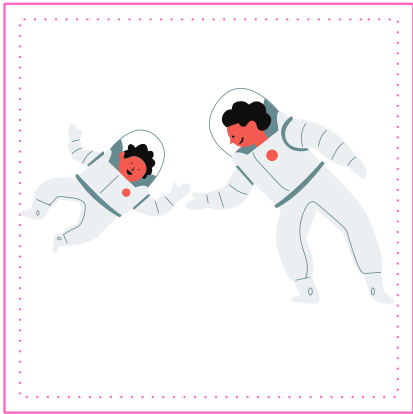
Minimalna liczba graczy to dwie osoby. Karty układamy na stole w taki sposób, aby obrazki były zakryte. Każdy gracz w jednym ruchu odkrywa dwie karty. W przypadku odnalezienia pary, zabiera ją z pola gry i w ten sposób ma dodatkowy ruch. W przypadku, kiedy nie udało się odnaleźć pary, karty zakrywa się i ruch wykonuje kolejny gracz. Gra trwa do zebrania wszystkich kart. Gracz z największą liczbą par zwycięża.



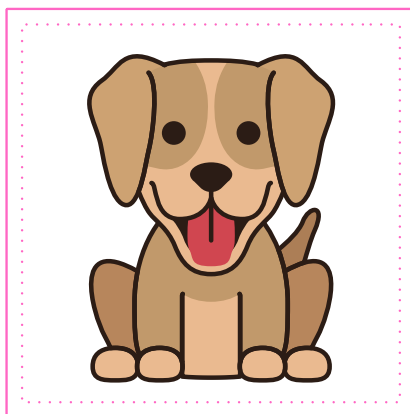
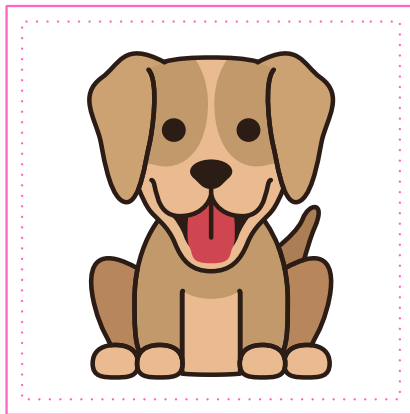
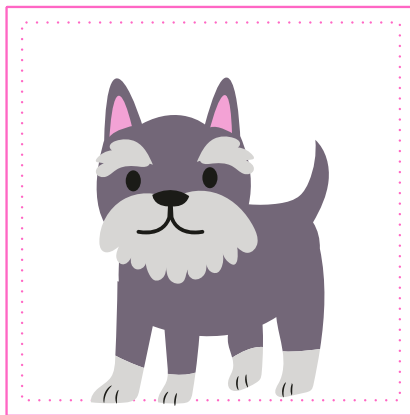
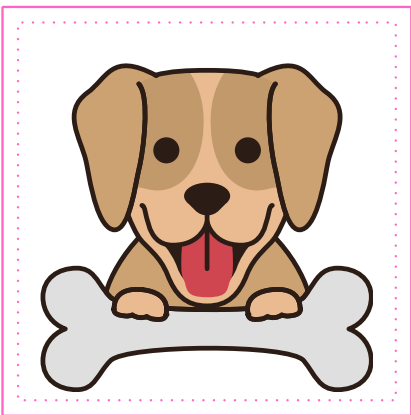
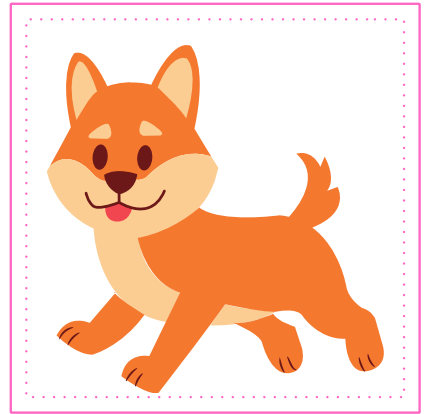
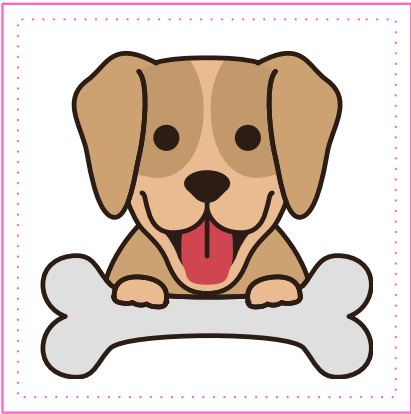
Kosmos

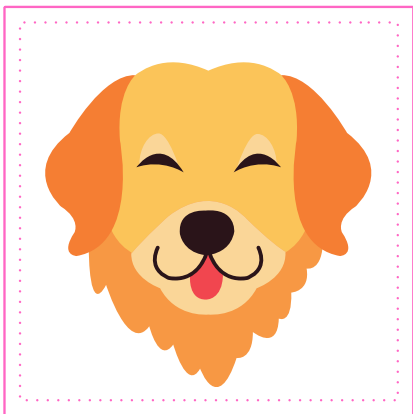
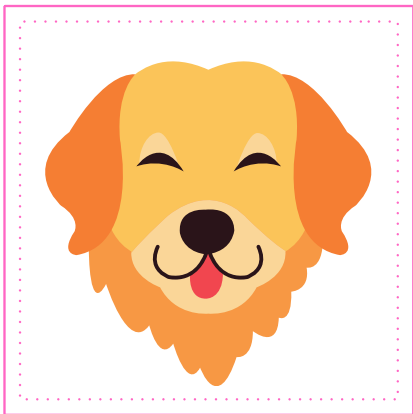
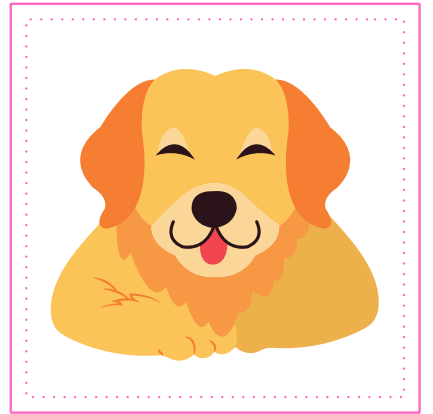


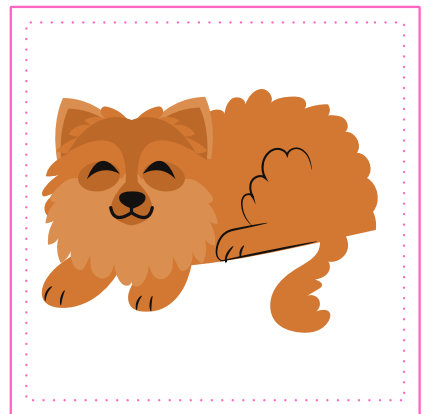
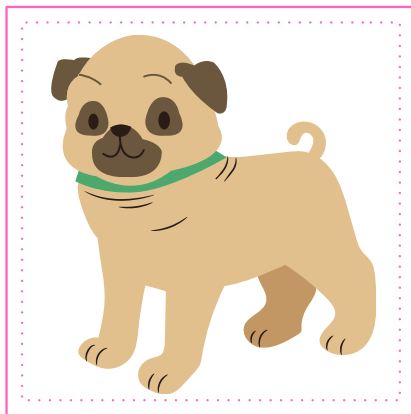
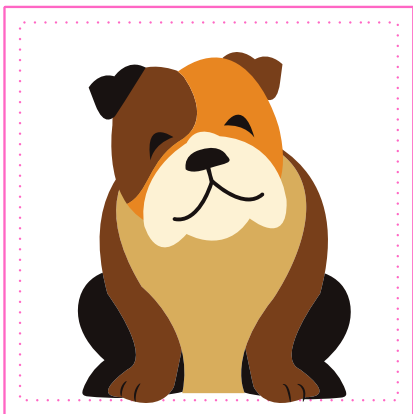
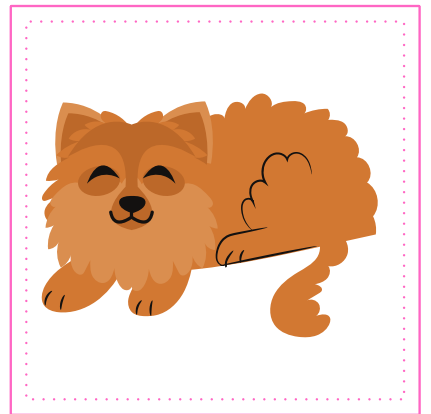
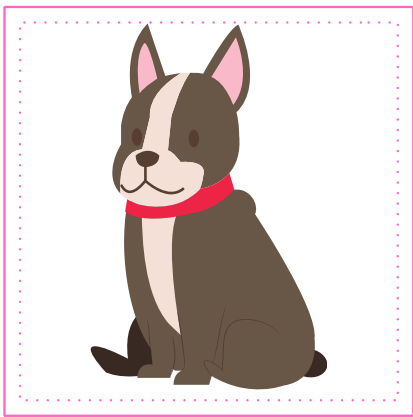
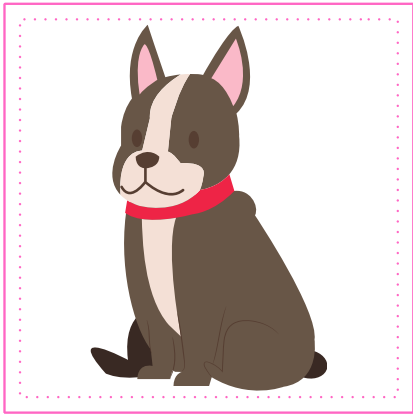




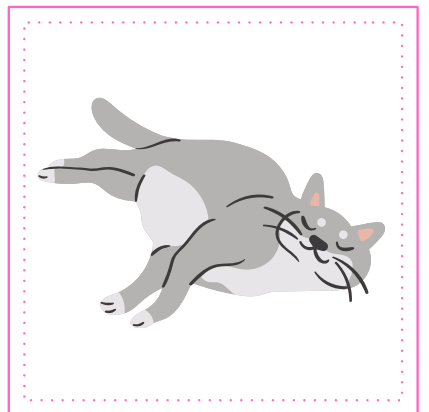
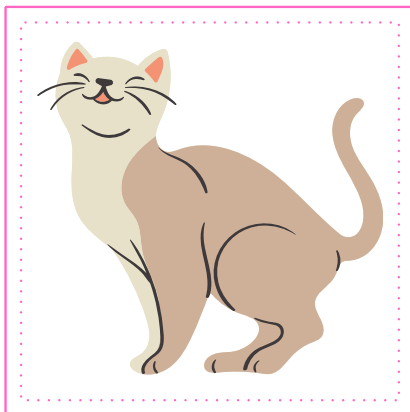
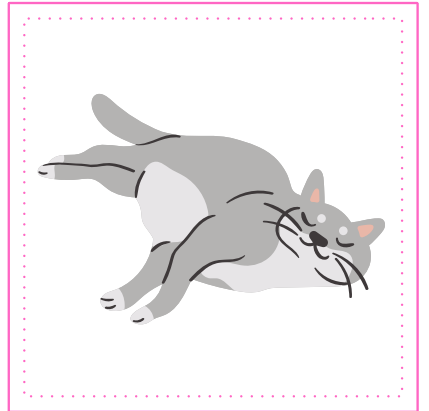
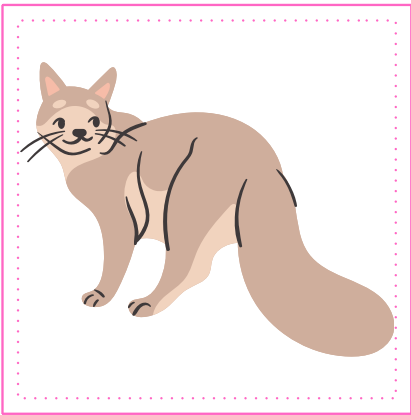
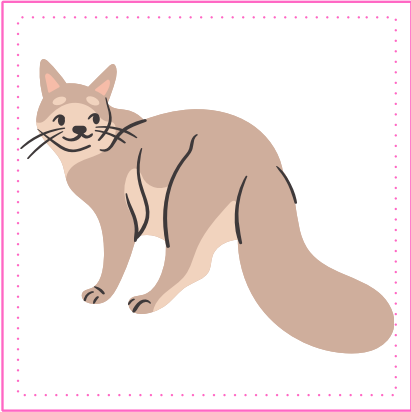
Psy

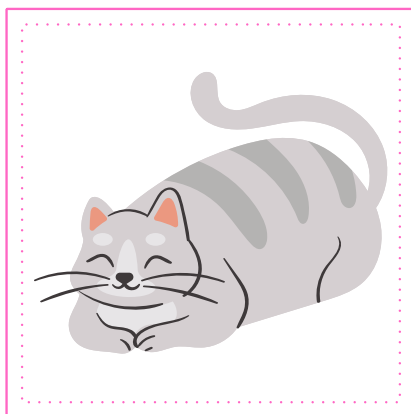
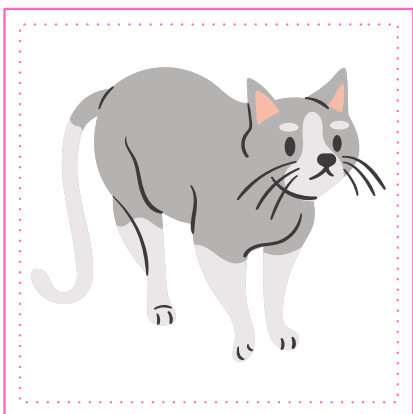
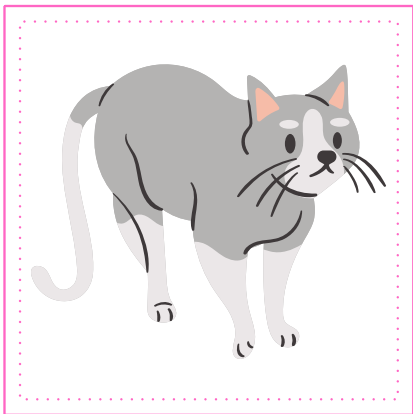
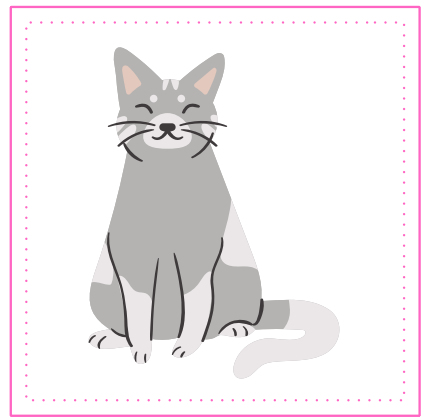
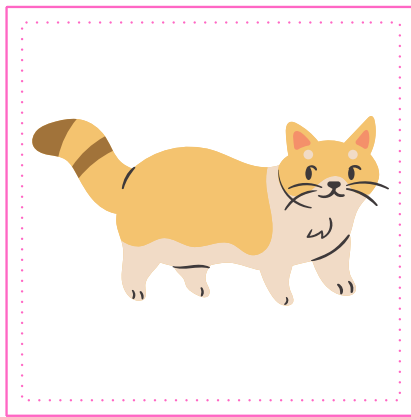
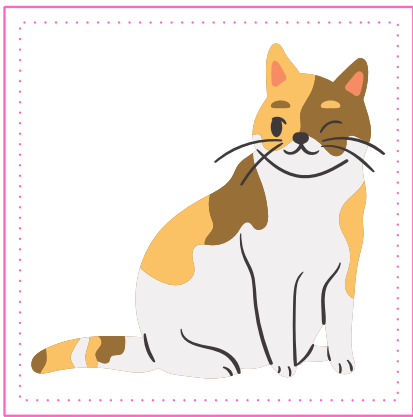
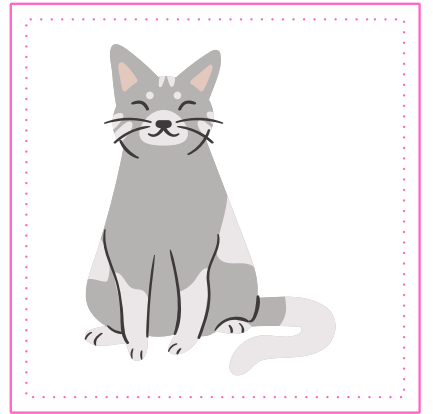
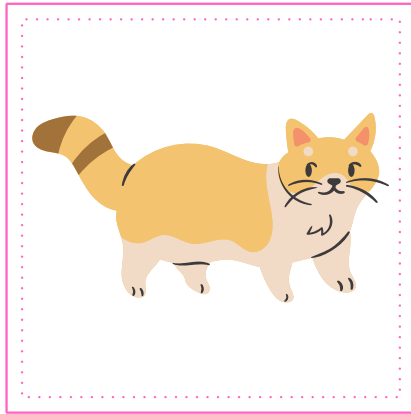
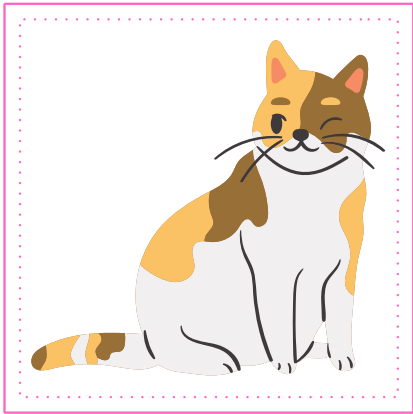


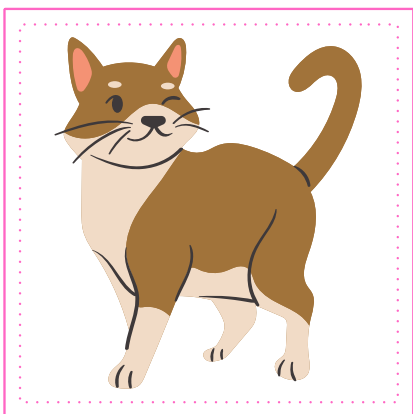
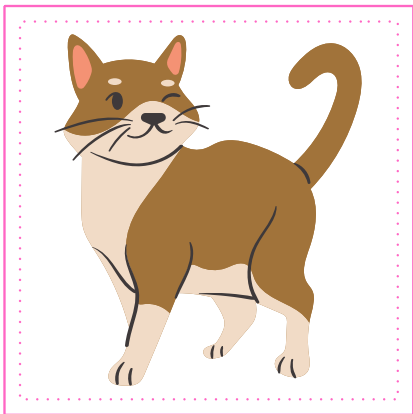
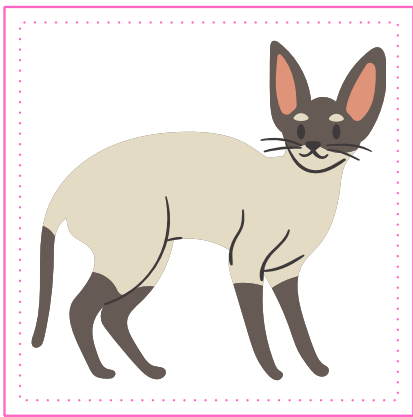
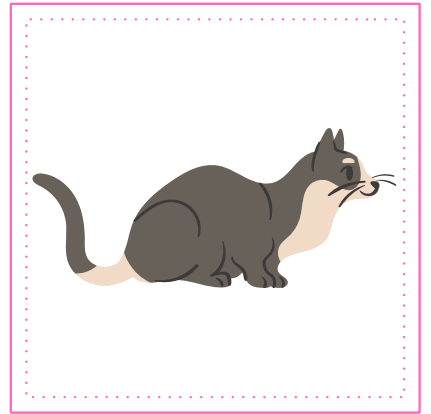
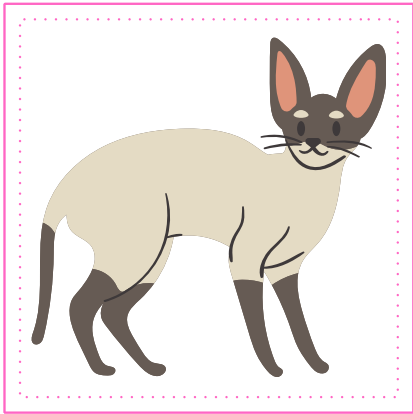




Koty







Figury

